



November 2016

Volume 21 #4

Table of Contents

[LWVAA Calendar](#)
[From the President](#)
[Programs Post-Election: Education, Education, Education!](#)
[Membership Report and Interest Survey](#)
[Board Contact List](#)
[Communications Update](#)
[Voter Registration update](#)
["Like" Our League on Facebook](#)
["Follow" Our League on Twitter](#)
[Donations for Voters Guide](#)
[Honors, Memorials and Donations](#)
[Shop at Randalls and Support LWVAA](#)
[Leave a Legacy to Your League](#)

The League shall not support or oppose any political party or candidates. It may take action on governmental measures and policies in the public interest after significant study and consensus is reached.

The VOTER is partially funded by the League of Women Voters of the Austin Area Education Fund.

[If you received this email from a friend, click here](#)

[Join Our Mailing List!](#)

to get on our list. You do not have to be a member. We will NOT give your email address to anyone else.

LWVAA Calendar

Monday, November 7, 4:00 pm. Board Meeting, League Conference Room, 1011 W. 31st., Austin Members.

Tuesday, November 8, Election Day.

Monday, December 5, 4:00 pm. Board Meeting, League Conference Room, 1011 W. 31st., Austin Members.

Saturday, December 10. New Member Coffee. time/place TBA

Back issues of the LWVAA Voter can be found at [this link](#).

From the President

Voting reminders

Board Contact List

[Cinde Weatherby](#)

President

[Lea Masiello](#)

1st VP Program

vacancy

2nd VP Community
Relations

[Jaci Collins](#)

3rd VP Organization

[Jacklyn Williams](#)

4th VP Voters Service



If you read this before Friday November 4, and haven't voted, Early Voting is still open but then the polls go dark from November 5 until the Election Day November 8! No excuses, you need to vote and persuade your family and friends too. Research shows if you ask someone to go vote, they listen and act.

Know before you vote!

In Travis County it's simple: go to

[VoteTravis](#)

1. Put in your name and birthdate, and up pops a list of close-by polling places (including wait time) and an icon link to your very own personal ballot!

2. Before heading to the polls, print out your personal ballot to take with you and use the *LWV Austin Voters Guide* to help you decide on the many races. If you still can't decide about an Austin City Council, ACC Board, or the AISD at-large race, listen directly from candidates, in videos of our candidate forums at www.LWVAustin.org - just choose the drop-down menu item under "Voter Info" for "Candidate Forums."



Need a ride to the polls?

You have multiple free or low cost opportunities to get a ride. Ride CapMetro free on Election Day. Yellow Cab and some rideshare services are offering free or reduced rides too. Individuals are also volunteering their time. Check out the details [here](#) and [here](#). Still can't find a ride, give us a call at the LWV Austin office at 512- 451-6710.

Election Thanksgiving

I'm guessing most of you will be most grateful and thankful just to have this year's general election over! I wouldn't disagree. But, I've got a long list of other thanks:

- The many League volunteers who spent long hours doing their best to Make Democracy Work
 - Producing the *Voters Guide*
 - Registering a record number of new and updated voters
 - Conducting candidate forums in a civil setting without discord
 - Assisting newly hatched local ad hoc groups who share our goals, such as the Children's Defense Fund/LWV-TX/Las Comadres Voter Navigator Project, TechVotes, GRITO, and Take 5 to Vote
- The LWV-TX Board and staff for developing and expanding GOTV materials and our online presence
- Our amazing Travis County Tax Assessor-Collector/Voter Registrar Bruce Elfant and his dedicated Voter Registration Office for again shattering registration records
- Our wonderful Travis County Clerk Dana DeBeauvoir and her Elections Department who offer the easiest and most convenient poll experience possible and improve poll place information each year
- The AISD staffers who staged an impressive Mock Presidential Election in most of the district's schools working with County and League support
- For the dedicated work of the organizations who lead the fight and work with us directly to make voting available to all Texas citizens and also protection of the ballot box and polling place
 - [Texas Civil Rights Project](#)
 - [The Lawyers Committee for Civil Rights](#)
 - [The Brennan Center for Civil Justice at NYU Law School](#)

Final Thoughts

[Diane Davis](#)

Secretary

[Gwen Santiago](#)

Treasurer

[Judy Parken](#)

[Brenda Koegler](#)

Membership Co-Chairs

[Frances McIntyre](#)

Advocacy and
Voters Guide Editor

[Charlotte Slack](#)

Communications

[June Conway](#)

Voter Registration

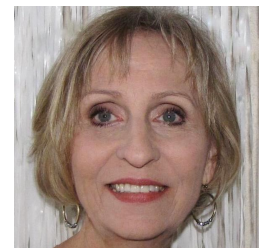
[Donna Pauler](#)

Voter Editor

[Sara Groff](#)

Development

Communications Update



Special thanks to **Cinde Weatherby**, **Hal Jennings** and **Cindy Schaufenbuel** for carrying on what feels like a media blitz during this historic election.

Look for improvements in the VOTER format in January.

~Charlotte Slack
Communications
VP-CommunityRelations@LWVAustin.org
979-255-1680

Voter Registration Update

There were 15 Voter Registration events in October with a wrap up of 451 potential voters captured.

So now be sure to **VOTE!**



No matter the results of this or any election, LWV remains resolute. The more people vote, the more attention they receive from those elected. Every election has winners and losers, but the true winners are those who have the opportunity to vote and register their, hopefully informed, opinions about how they are governed.

Whether you're happy with the election results or want to spit nails, take a listen to some wise advice from someone we all dearly miss - **Ms. Molly Ivins**. Check out [What Would Molly Say?](#)

Happy Thanksgiving!

~ **Cinde Weatherby**, President
President@LWVAustin.org

Programs Post-Election: Education, Education, Education!



The Role of Education in Voter Participation

Election Day will come and go quickly, and we all hope that we have, in some way, contributed to "getting out the vote." But our work on "getting out the vote" is not finished once the election is over; instead, we will only shift our focus a bit to consider how education is key to people becoming committed to registering and voting in all elections. Our membership has indicated an ongoing interest in topics related to education. Members are

also still enthusiastic about the "Ladders of Opportunity" programs which focus on broader socio-economic aspects of life in Austin. These two areas will be combined for an interesting set of discussions in 2017.

"Ladders of Opportunity" programs and Education

We will begin our "ladders of opportunity" programs after the election to learn about ways in which education in Austin is already helping young people develop into community-conscious, voting adults. While we focus on successful educational actions already in place, we will explore what else can be done in Austin to increase educational success. LWV Austin has previously been a leader in studying education, and we will continue this tradition as we consider both the larger picture of education in Austin, such as the overall effectiveness of the AISD, Austin Community College and specific, innovative programs, as well as issues such as the integration of technology into the curriculum at all levels.

Unit Meetings

Our membership indicated in surveys last year that it would be great to have more unit meetings, small-group meetings in homes and libraries (or other public spaces) to discuss topics we care about. Unit meetings have, in the past, included both morning and evening times to help accommodate people's schedules. We have also occasionally had speakers at unit meetings. Unit meetings give us a chance to discuss topics in depth, as well as spend time together in small groups, getting to know each other better.

Possible Topics: We can explore these kinds of questions in unit meetings:

- What is the current graduation rate in the AISD, surrounding school districts and Austin Community College? What factors seem to contribute to higher or lower rates?

~ **June Conway**,
 Voter Registration Director
VoterRegistration@LWVAustin.org

"Like" Our League on Facebook



It's so easy to follow our League on Facebook.

1. Go to facebook.com and login to your existing account or create a new one.
2. Enter "League of Women Voters of the Austin Area" in the search box at the top of the page.
3. Facebook will show you possible matches to your search terms as you type. Simply click on the box with our logo and title.
4. Once you get to our page, there will be a button that says "Like" and has an image of a "thumbs up."
5. Click on that button. Now you are subscribed to our page and will see our news stories on your Facebook homepage. You can choose to receive notifications of all our posts, by turning on notifications.

Follow Our League on Twitter



It's so easy to follow our League on Twitter.

1. Go to twitter.com and login to your existing account or create a new one.
2. Search for [@lwvatx](https://twitter.com/lwvatx) in the search box at the top of the page.
3. On the left hand side of the page, under "People" click on our logo.

- What is the current rate of students going on to higher education of all kinds? What are schools doing to help students find the right post-graduation programs?
- How is Austin Community College working with local school districts to help students progress to higher education and earn credit while still in high school?
- What are the general weaknesses of area school districts and why are these persistent?
- How are area schools meeting the challenges of providing equal access to technology for all students?
- What needs to happen to increase students' access to the technological skills they need to succeed in the work force and in higher education?
- Are there gaps in technological skill development due to gender, ethnicity, and economics? If so, how can these be addressed and changed?
- How has technology changed the development of students' communication skills?
- What communication skills do employers and institutions of higher education expect?
- What support do the schools need from the community in order to maximize their success in preparing students for work and/or college?
- How does a student's socio-economic background affect their ability to graduate?
- What support systems do homeless students have in Austin?
- What should current research about the importance of early childhood education affect legislative priorities?
- How can education and healthcare be connected for a holistic and comprehensive approach to nurturing students?

State of the City Program:

We have a wonderful speaker lined up in March for our State of the City evening, **Susan Dawson**, who is an educator, a business leader, and the founder of the E 3 Alliance (Education Equals Economics). We will schedule unit meetings prior to the SOC dinner so that LWV can learn about Ms. Dawson's work to align educational initiatives with economics.

Please Volunteer to Help with Programs!

After the election, I will ask once more for volunteers for a committee to plan unit meetings around the topic of education and success. We will also plan a larger, general meeting with a panel of speakers around the topics of education and "ladders of opportunity." Please email me if you are interested in participating in a committee and/or have ideas for unit-meeting topics, speakers, and a focus for a general meeting. leamasiello@gmail.com

~Lea Masiello,

1st VP Programs

VP-Programs@LWVAustin.org

Membership Report and Interest Survey

Member Interest Survey:

We had one member coffee for our newest members this past month. Our annual **Holiday Brunch** celebrating our new members of 2016 will be **December 10**, so please add that to your calendars. We will be sending out additional information to you very soon.



4. Click on the "follow" button and then you will be subscribed to the LWVAA page and get updates on any of our posts.

Honors, Memorials and Donations

The League received a donation for the Education Fund from **Janice May's** estate. Janice was a government professor at UT. She was a past president, parliamentarian and member of the League of Women Voters. She passed away July, 2016.

Sara Groff donated a banner for the League to use at Voter Registration and other events.

Jo Reichler made a donation to the *Voters Guide* to honor **Bruce Elfant**, staff and volunteers.

Phillip Spertus made a donation to the *Voters Guide* in honor of Jo Reichler.

Additional donations were made from **Terrell Blodgett, Barbara Cambron, Diane B. Davis, Leif Fredin, Kara Hall, Barbara Jones, Brenda Koegler, Julia Marsden, Willie Scoggins, Ellen Strong, Nancy Walker, and Philip White plus Blue Cross/Blue Shield, KSV Capital, Inc., and the National Council of Jewish Women** made donations since last month to the Education Fund for the *Voters Guide*.

Shop at Randalls and Support the League

Randall's Good Neighbor Program gives the Austin League a percentage of sales from members who link the League to their **Remarkable Cards**. Our account number is **465**.

[Click on this link](#) for a document to complete and return to any

If you are either a new member or a member who may have a bit of time to volunteer for the League (either regularly or occasionally), please complete this [Member Interest Survey](#). This will help us identify your skills and interests. A few new members have filled this out already, but most of our members have not. We especially need to hear from all members who have a little time to help us. Thank you for [doing this now](#).



New Members:

Mollie Snow and **Kate Winternitz** joined our ranks this past month. As a member of the Austin League, each of you is also a member of the national (LWVUS) and state (LWVTX) Leagues. See these links for an abundance of educational information.

www.lwvaustin.org www.lwvtexas.org www.lwv.org

Regular and Sustaining Memberships: Of your \$60 in regular dues, \$54 goes to the LWVTX and the LWVUS, and only \$6 is left to support our Austin League. Paying at the sustaining level greatly benefits the Austin League because the extra money stays in Austin and supports our local League's activities.

Thank You, Sustaining Members:

Special thanks to these sustaining members who renewed/joined this past month: **Shelly Baumgartner, Barbara Cambron, June Conway, Janet Fredin, Vikki Goodwin, Kara and Donny Hall, Susan Morrison, Mary and David Overton, Otis Rhea Schmidt, Amy Taylor and Janet Whitehead.** We are grateful for your additional financial support for our local League.

Thank You, Renewing Members:

Many thanks to **Margaret Hester** who renewed this past month. We depend on your support and appreciate your renewals.

New Membership, Renewal Dues Payment, Address Changes: Please mail your name, address, phone number, email address, household member (if applicable), along with your dues payment and/or any changes to the LWVAA office, 1011 W. 31st, Austin, TX 78705. Checks may be made out to the LWV of the Austin Area. Choose an amount below. Or you may instead [click here](#) for renewals (or [click here](#) for new memberships) to pay your annual dues online by credit card via PayPal while providing all the above information.

Here is the schedule of dues:

	Individual	Household	Student
Sustaining Dues	\$ 100.00	\$ 150.00	
Regular Dues	\$ 60.00	\$ 90.00	\$ 20.00

Contact one of us anytime with your League questions.

~ **Judy Parken**, Co-Membership Chair,
Membership@LWV LWVAustin.org 512-502-0278.

~ **Brenda Koegler**, Co-Membership Chair,
Membership@LWV LWVAustin.org 817-781-5184

Randall's store to join the Good Neighbor Program and help our League.

We've noticed and increased contribution and appreciate your support.

Leave a Legacy to Your League

Making a legacy donation to the League of Women Voters of the Austin Area Education Fund in your will is among the easiest ways to offer support of the LWVAAEF's work for years to come.

We suggest the following language to include the Austin League Education Fund as a beneficiary of a will or trust: "I give, devise, and bequeath to the League of Women Voters of the Austin Area Education Fund, a charitable organization formed in the State of Texas, with offices at 1011 W. 31st St, Austin, Texas 78705, {the sum of \$___}{___ percentage of my residuary estate}." If you already have a will, you can have your attorney add a codicil to include the LWVAAEF.

After you've added the League, please email the Austin League office, lwvaustin@lwvaustin.org, so we can list you as a member of our League's Legacy Society.

